

ROKWEAR®

WE PROTECT

PRODUCT DATASHEET



AQUASHIELD+

CUT
LEVEL

A

3131X

HAND PROTECTION: CUT RESISTANT GLOVES

AQUASHIELD+ SECURE GLOVE

PRODUCT CODE: OGL.2091

FUNDAMENTALS



COATING

Smooth latex & crinkle latex



TYPE

General handling - Wet & Oily



LINER

15 gauge polyester

SIZE/LENGTHS

S/7-2XL/11 / 230-270mm

PACK SIZE

10

WEIGHT

0.10kg

ENVIRONMENT

INDUSTRY TYPES:

Logistics & warehousing
Building & construction
Maintenance
Highways

CONDITIONS:

Dry, Wet, Oily

PRODUCT FAMILY:

AQUASHIELD+

COMMODITY CODE: 6116108091

PRODUCT DESCRIPTION

Double-dipped, fully waterproof glove for wet, oily and dry handling. Crinkle latex palm and smooth latex back provide grip, comfort, and EN388 Cut A protection.

CONFORMS TO



EN ISO 21420:2020; EN 388:2016+A1:2018: 3131X
EN ISO 21420 Dexterity Level 5

SATRA

Certificate: 2777/26723-01/E00-00
Issue Date: 26 February 2025

LEVELS



ABRASION:

2000 cycles



TEAR:

50N



TDM:

X



CUT:

1.2 cycles



PUNCTURE:

20N

SIZE GUIDE

GLOVE LENGTH (MM)

PALM DIAMETER (MM), palm width below the knuckles

HAND LENGTH (MM), distance between wrist and tip of middle finger

GLOVE SIZE:

6

220

152

160

7

230

178

171

8

240

203

182

9

250

229

192

10

260

254

204

11

270

279

215



KEEPING GLOVES ON HANDS -
COMBINING COMFORT AND
CUT LEVELS

ROKWEAR®

GET IN TOUCH WITH US

Call: +44 (0) 330 441 3500

E-mail: uksales@rokwear.com

STANDARDS

The most updated standard includes two different cut resistance tests: the TDM-100 Test and the Coup Test. Besides cut resistance, the EN 388 standard also evaluates gloves for abrasion, tear, and puncture resistance, each indicated by a numeric rating. This comprehensive approach ensures that gloves are tested for multiple aspects of performance.



1. Abrasion resistance
2. Cut resistance, COUP test
3. Tearing strength
4. Puncture resistance
5. Cut resistance, TDM test ISO 13397
6. Impact protection

HOW EACH STAGE IS TESTED...

1. Abrasion resistance



Material is subjected to abrasion with sandpaper under a determined pressure. Protection is indicated on a scale of 1 to 4 depending on the number of turns required until a hole appears. Highest performance level 4 = 8,000 cycles.

2. Cut resistance, coup test



A blade is passed over the liner until it cuts through. With a scale between 1 and 5, where 5 indicates the highest cut protection. An X, signals a failure. If the material blunts the knife during this test, ISO 13997 (TDM test) shall be performed instead.

3. Tearing strength



The force required to tear the glove material apart is measured. The protection level is indicated by a number between 1 and 4, where 4 indicates the strongest material.

4. Puncture resistance



Based on the amount of force required to puncture the material with a nail. Indicated by a number between 1 and 4, where 4 indicates the most puncture resistant material. (Highest performance level 4 = 150 Newtons).

5. Cut resistance, TDM test ISO 13997



Compared to the coup test, the blade travels a shorter distance, so blunting has less effect. These are graded A - F, F being the highest protection. If a letter is assigned, this method determines the protection level instead of the coup test (point 2).

6. Impact protection



If the glove has an impact protection, this information is given by the letter P as the 6th and last sign. If no P sign is present, this means that no impact protection is claimed.

SPECIAL FEATURES

- ✓ DOUBLE-DIPPED WATERPROOF PROTECTION
- ✓ CRINKLE LATEX PALM FOR ENHANCED GRIP WHEN GENERAL HANDLING

AQUASHIELD+

The AQUASHIELD+ range is built for tough, wet and cold environments. When grip, durability, and water resistance really matter, these gloves are designed to step up.

To keep hands dry and safe, AQUASHIELD+ gloves feature a double-coated construction, preventing liquid penetration where it counts.

Every style then adds its own specialist coating to suit different tasks. From a nitrile base with a sandy nitrile palm for grip in oily or wet environments, to smooth and sandy latex combinations for flexibility and traction, and crinkle-finish latex for excellent grip in damp conditions.

With EN 388 scores of 4X44D, 4X43C, and 3131X, the AQUASHIELD+ range gives workers across construction, utilities, waste management, and outdoor trades the confidence to work safely and effectively, whatever the weather throws at them.



CERTIFICATION BODY



These garments comply with the requirements of PPE Regulation (EU) 2016/425 and PPE Regulation (EU) 2016/425 as retained in UK law and amended.

Notified Body: SATRA Technology Europe Ltd, Bracetown Business Park, Clonee. Co. Meath D15 YN2P Ireland. Notified Body No. 2777

Following the UKCA Type-Examination this product group has been shown to satisfy the applicable essential health and safety requirements of the PPE Regulation (2016/425) as brought into UK law and amended as a Category II product.

Country of origin: China



KEEPING GLOVES ON HANDS -
COMBINING COMFORT AND
CUT LEVELS

ROKWEAR®

GET IN TOUCH WITH US

Call: +44 (0) 330 441 3500

E-mail: uksales@rokwear.com

UNDERSTANDING COATINGS

When it comes to choosing work gloves, selecting the right coating can make all the difference in safety, comfort and performance. Nitrile and latex coatings both offer unique benefits, making them suitable for a range of industries and tasks.

LATEX

Latex-coated gloves are a dependable and cost-effective PPE option. They perform exceptionally well in dry conditions, offering excellent grip and impressive durability. The thicker latex coating provides solid protection against abrasion and general wear and tear.

However, if you're working in wet environments or handling oil or chemicals, latex may not be the best choice. It doesn't perform well around moisture, and the thicker design can slightly reduce dexterity.

- Superior flexibility & dexterity
- Enhanced grip in wet conditions
- Cost effective & comfortable

KEY INDUSTRIES:

- Glass handling
- Assembly
- Metal handling
- Scaffolding
- Roofing



NITRILE

When you're working with oil, water, or in hot and sweaty environments, nitrile is your go-to material. It offers excellent grip, making it ideal for tasks like mechanical and engineering work.

While nitrile is typically more expensive than latex—especially the foam variety that provides superior grip—flat nitrile is a more affordable alternative, though it doesn't offer the same traction. Nitrile doesn't perform as well as latex in dry conditions, but its thicker coating makes it highly durable. That's why nitrile-coated gloves are a great choice for oily, dirty, and high-abrasion environments.

- Exceptional durability and chemical resistance
- Superior grip in oily conditions
- Hypoallergenic to prevent reaction

KEY INDUSTRIES:

- Oil and gas
- Rigging
- Engineering
- Wet handling



PU

Similar resistance to oil, water, and chemicals as nitrile, but with superior dexterity and flexibility—ideal when precision matters.

Cost-effective, polyurethane is naturally grippy and doesn't require additional treatments to enhance traction. Performs well in wet, oily, and chemical-exposed environments. Offers slightly less grip in dry conditions compared to latex, and their lightweight, flexible construction means they may not last as long as heavier-duty latex or nitrile options.

- Excellent abrasion & tear resistance
- Smooth coating for precision handling
- Lightweight & breathable for all-day comfort

KEY INDUSTRIES:

- Timber handling
- Mechanics
- Construction
- Warehousing



Quality	Latex Coated	Nitrile Coated	Polyurethane Coated
Grip (dry)	● ● ●	● ● ○	● ○ ○
Grip (wet/oily)	● ○ ○	● ● ●	● ● ○
Cost	● ● ○	● ○ ○	● ● ●
Flexibility	● ● ○	● ○ ○	● ● ●
Chemical Resistance	● ○ ○	● ● ●	● ○ ○
Water Resistance	● ● ○	● ● ●	● ○ ○
Dry Handling	● ● ●	● ● ○	● ● ○
Durability	● ● ○	● ● ●	● ○ ○
Oil Resistance	● ○ ○	● ● ●	● ○ ○



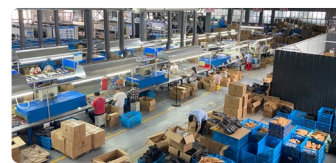
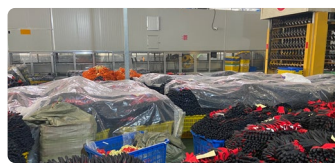
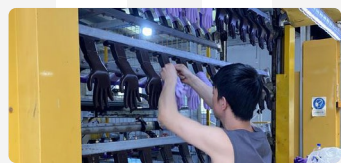
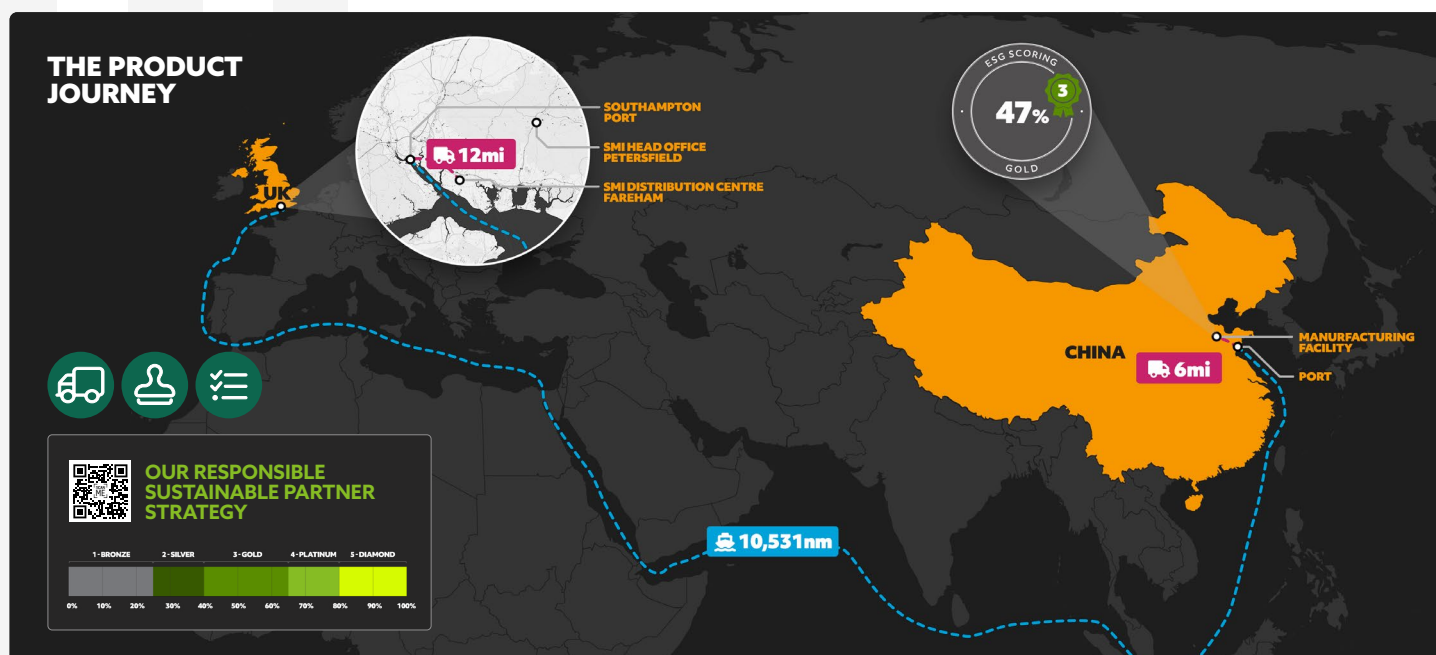
KEEPING GLOVES ON HANDS -
COMBINING COMFORT AND
CUT LEVELS

ROKWEAR®

GET IN TOUCH WITH US

Call: +44 (0) 330 441 3500

E-mail: uksales@rokwear.com



OUR PARTNER'S COMMITMENTS

Our glove manufacturing partner operates with a foundation of ethical and responsible practices.

- Holds **ISO 9001** certification, reflecting a commitment to quality management.
- Current policies include a **Code of Conduct, Sourcing Policy, Management System, Anti-Bribery Policy, CSR Policy, and Equality & Diversity Policy.**
- Pays **living wages**, supported by a written statement outlining wage standards.
- Uses **FSC-certified materials**, though recycled content has not been disclosed.
- Provides **CTC test reports** for product verification.
- The factory currently has **no Health & Safety or Environmental policies or accreditations** - highlighting an opportunity for future sustainability development.

WASH CARE

Caring for your gloves properly helps extend their life and minimise environmental impact.

- If gloves have coatings (e.g., nitrile, latex), avoid soaking or using harsh detergents.
- Machine wash cold or lukewarm (**up to 40°C**) on a gentle cycle.
- **Do not tumble dry** - air dry flat or hang to dry to prevent heat damage.
- Choose **biodegradable, phosphate-free detergents** that avoid harsh chemicals and microplastics.
- **Wash gloves inside out** to protect coatings and reduce microfibre shedding.

RECYCLING SCHEME

End of Life: What happens to our gloves?

Used gloves are processed through a resource-recovery route to minimise waste and support renewable energy generation.

Shredding Into SRF

Gloves are mechanically shredded and converted into Solid Recovered Fuel (SRF) – a high-energy alternative to coal or gas. SRF is used in energy-from-waste facilities, generating electricity and heat while diverting materials from landfill.

Environmental Benefits

- Reduces landfill waste
- Supports renewable energy targets
- Lowers reliance on fossil fuels
- Offers a controlled, lower-impact recovery method

ORDER YOUR BOX TODAY



ROKWEAR®

GET IN TOUCH WITH US

Call: +44 (0) 330 441 3500

E-mail: uksales@rokwear.com